



JAMTLI LIVING UNIVERSITY

Combining knowledge from the past and present to shape a modern sustainable lifestyle.

JLU is a new role where Jamtli Museum becomes a protagonist in shaping our future. It is a network where Jamtli brings together the local university, Gaaltje indigenous Sámi group, businesses, municipalities, schools and citizens to a dialogue for bold climate action. And it has given results. JLU is now working on its first collaborative pilot project: the planning and building of a creative living university in Östersund. A neighborhood that combines knowledge from the past and present to shape a modern sustainable lifestyle - where people can live their normal lives, as well as be a part of a constant learning experience on sustainability.

To make radical positive changes on our environment we need to change our lifestyles. The living university offers an arena to discuss, illustrate and develop different ways of living. Learning by doing, institutions and residents together.

The design of the living university is based on a social, ecological, technical and economic vision. Through an ecocycle adapted architecture, apartments, common installations and nearest surroundings become a system where energy, water, waste, cultivation and livestock are integrated into a functional and pedagogical whole. Jamtli's experience from the outdoor museum will be available to stimulate a circular and holistic approach to living - something that today becomes relevant to address challenges with self-sufficiency, biological diversity, reduced ecological footprint and possibilities for healthy social interactions between neighbours. The living museum will be a hub for interdisciplinary research, innovation and development between academia and companies. It will also be used as a resource for educational experiences and awareness for schools, the public and residents. The area is therefore divided into private and public zones.

JLU is a radically new way for society to experience Jamtli - as an active stakeholder leading and participating in a dialogue to shape a sustainable future. Through the building of a living university we also generate a new way to relate to people. Shifting from mere exhibition to participation in everyday life, with small daily tasks that make a difference. Whether by restoring native crops with residents or developing innovations, we are exchanging ideas, working together and illustrating new survival strategies to save mankind and our biological diversity.

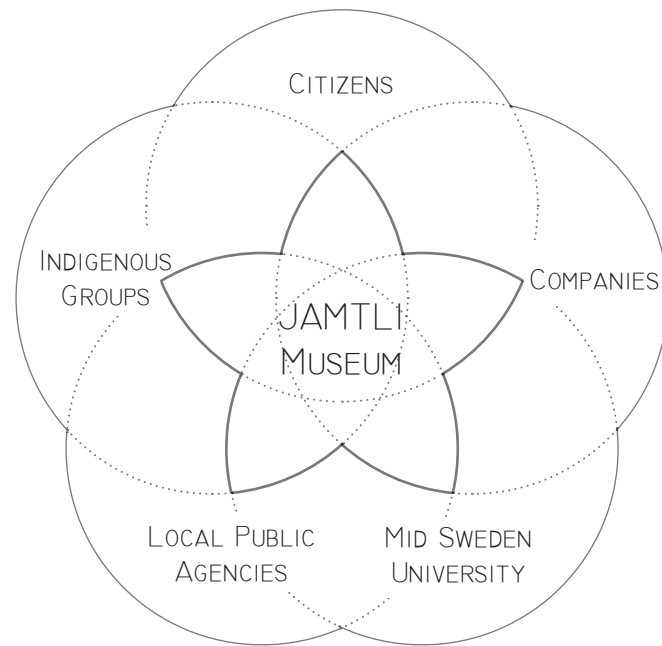
About Jamtli Museum and our Region:

Jamtli finds itself in Östersund in the mountainous region of Jämtland Härjedalen, northern Sweden. It is an indoor and outdoor museum, attracting 250,000 visitors yearly. Our region is a place of both green innovation, entrepreneurship and curiosity as well as a conflict-ridden place where the indigenous Sámi population have been struggling for recognition and survival. This place in itself encompasses the many challenges to solving our human and environmental crises globally.

About JLU:

JLU is an ongoing pre-study (August 19 - June 21) financed by the Region Jämtland Härjedalen and EU. It has both initiated JLU-network and the living university plans to be ready for inauguration and move-in mid-2023, depending on finance and public agency permits.

A NEW ACTIVE ROLE IN SOCIAL TRANSFORMATIONA RADICAL NEW WAY TO EXPERIENCE MUSEUMS IN EVERYDAY LIFE....



As a museum we can generate a dialogue on climate action in a way that other organisations cannot. We can raise perspectives about the past and present with an independent voice, empowering those often unheard. We collaborate with Mid Sweden University with researchers from nine different areas of knowledge both in human and natural sciences. We believe this is crucial to solve our climate crisis.

The future is uncertain. Inviting different stakeholders to be a part of the design process for our living university helps us shape new perspectives and generate a positive transformation of our community.

We organized various workshops along our design process with civil society, businesses, organisations, municipality, indigenous groups and researchers. A total of 450 people have attended so far and today there are 80 people interested in moving in - from highschool students and families to 85-year-old retired people!

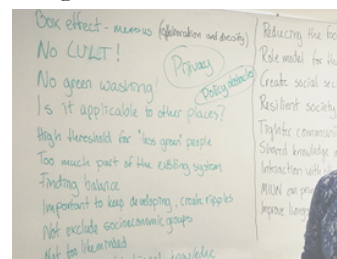
We ask questions:



We discuss:



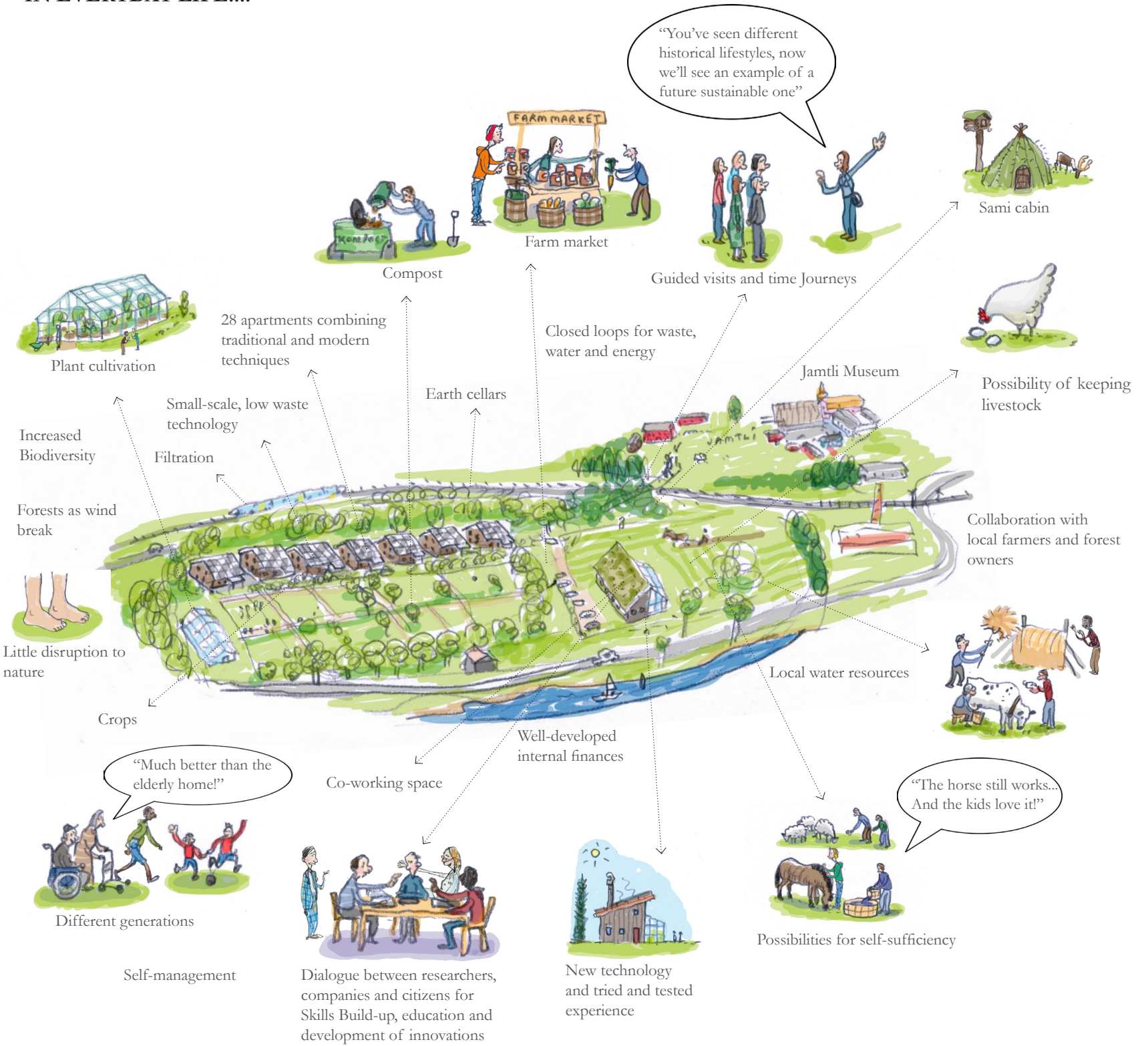
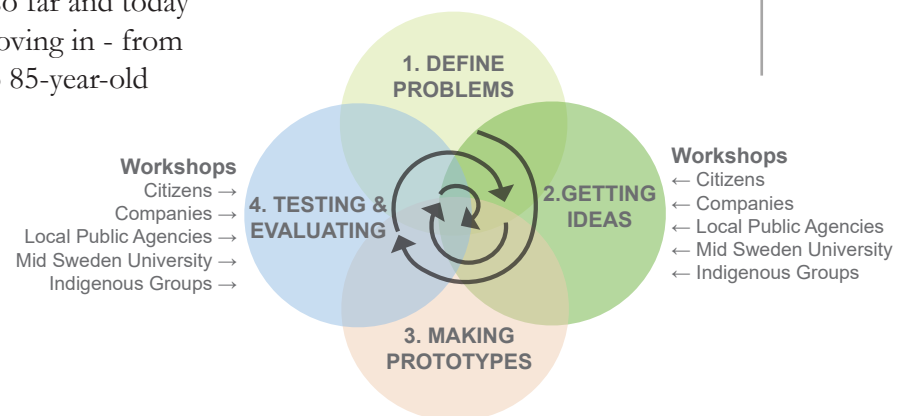
We get feedback:



... It shapes our perspectives!



And we do it repeatedly...



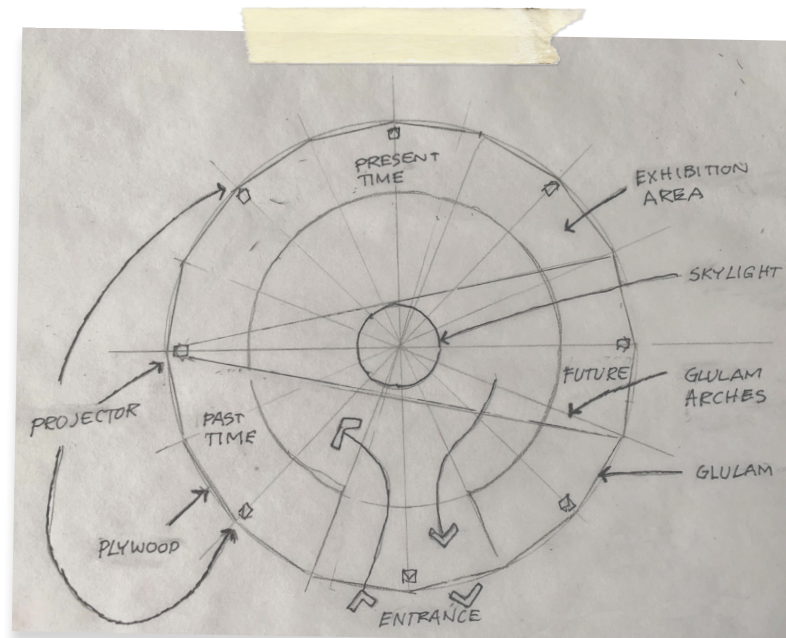
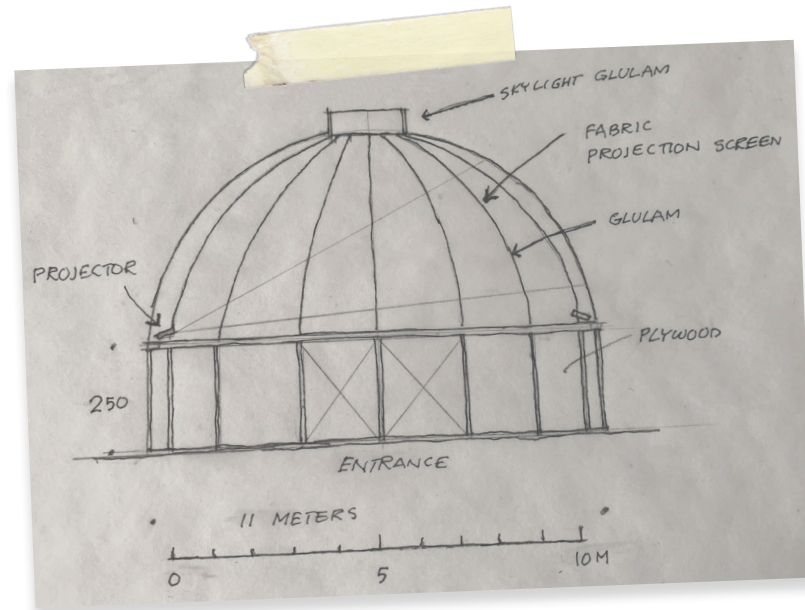
The planned site is located 500 meters from Jamtli museum and 1.5 kilometers from Östersund city center. It has conditions that invite to a combination of urban and off grid rural technical systems.

Go to the site:
<https://goo.gl/maps/NytJqbGDrukXmnuZ7>



Jamtli's
Homepage

A LIVING EXHIBITION FOR DIALOGUE ON A SUSTAINABLE FUTURE



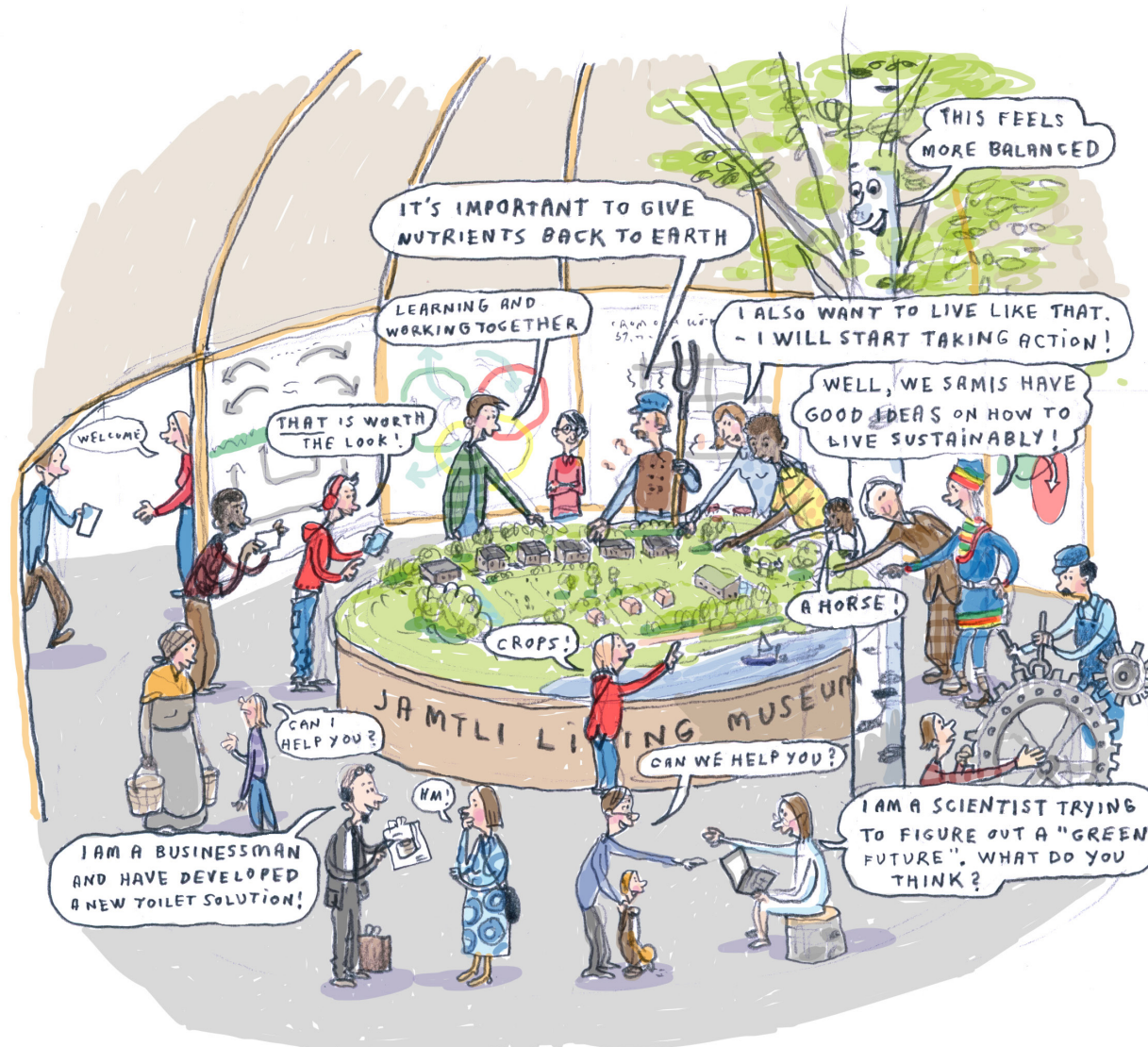
Sketches made by Anders Nyquist

The arena for dialogue is made of glulam arches and plywood. It is easy to move and assemble and can be scaled up or down - in the museum, in town or elsewhere. Along the interior circumference, a space for exhibition and projections on perspectives of the past and present, and lastly perspectives for a modern sustainable lifestyle. The latter may also be affected by the visitors.

WITH PERSPECTIVES - AND PEOPLE - FROM THE PAST AND PRESENT



Exhibition's exterior view



Exhibition's interior view

In the interior centre, a scale model of the living museum. Around the model, living characters from different historical epochs, contributing with their perspectives for sustainability. For instance, a farmer from the 1500's, a factory worker from the industrial revolution, an indigenous Sámi from pre-colonization, and a scientist, a tree and businessman from our time. The number of living characters can be adapted to fit budget and conditions for the exhibition. It may also be combined with the use of projections.

The visitor or group of visitors goes in and engages in a dialogue. The characters will tell them that they are discussing and working on a sustainable future. They do not have all the answers. The idea builds on a two-way dialogue between visitors and characters where everyone contributes, learns and gets new ideas for a better future.



THE TEAM



Kevin Denham, Jamtli Museum

Project initiator and manager, Jamtli Living University (JLU)

B.S.E degree in Environmental Engineering, Mid Sweden University. 160 ECTS in education sciences, architecture and agricultural engineering, Universidad de Buenos Aires (UBA).

I come from Argentina, but I was also raised in different countries in Latin America and Europe. My grandmother is Swedish. I have been living in Östersund for the last 8 years, where I moved to study and work with sustainable planning and building. Apart from this I have a strong interest in indigenous people's rights and knowledge and their role in sustainability.

I worked four years as project manager, developer and design manager for sustainable housing projects in engineering consultancies Sweco and WSP. My focus has been not only on buildings, but the life between the buildings and pedagogical architecture. Two years ago I started working at Jamtli Museum designing and building houses combining traditional and modern techniques. Something that inspired us to develop Jamtli Living University.



Lovisa Högberg & Lars-Åke Mikaelsson, Mid Sweden University

Research Coordinators, Jamtli Living University

Lovisa Högberg and Lars-Åke Mikaelsson represent the researchers at Mid Sweden University. Högberg is a senior lecturer and head of subject in Economics at the department of Economics, Geography, Law and Tourism. She is experienced in real estate economics research, studying firms' incentives and actions regarding economic, ecological and social sustainability. Mikaelsson is a senior lecturer and head of subject in Building Technology at the department of Ecotechnology and Sustainable Building Engineering. He is experienced in processes for a sustainable built environment, and has developed a dialogue model based on integrated planning with all stakeholders involved. Both participated in the EU funded project Sustainable Community Building: From central Norrland to Europe's sparsely populated areas. Together, the group of researchers represent various subjects in the faculty of Human Sciences and that of Science, Technology and Media, including Environmental Psychology, Public Health Science, Ecotechnology, Business and Administration, Tourism Studies, Political Science, Gender Studies and Quality Technology and Management.



Helena Kuhlefeldt, Nordic Center of Heritage Learning and Creativity (NCK)

Research and method development with heritage as a tool, Jamtli Living University

I have a BA in cultural analysis and MA in European Studies. I work as a project manager at the Nordic Center of Heritage Learning and Creativity, where we challenge and inspire people, both within the heritage sector as well as in other sectors, to use heritage as a tool for societal progress. We combine research and method development and strive to be the bridge between academia and practice. I have an educational background in cultural analysis and have previous experience from both civil society and the public sector. My areas of interest concern power, representation and identity, but also work processes and collaborating across topic and professional boundaries.



Anders Nyquist, EcoCycleDesign

Architecture and and closed-loop systems, Jamtli Living University

Architect SAR/MSA, Honorary Doctor of Technology. I live in Njurunda, northern Sweden, close to the Arctic Circle. I have been working as an architect since 1962, as designer, planner, contractor, teacher and school-master. I have been managing director for a local architectural firm with 90 employees and since 1991 I have had my own architectural firm. I work in networks together with experts and consultants all over the world. I work with small and large scale ecocycle adapted projects, as architect, planner, project manager and mentor. I teach EcoCycleDesign internationally. To be a reliable "green" architect I believe that you shall live as you teach. Therefore I live and work in an eco-village that I built together with my wife Ingrid, in an ecocycle adapted home and office. I drive a car fueled by ethanol. I grow my own organic food. I fish. I buy from the local market. For more info see my presentations by scanning the QR Code.

